



## ThermaCheck™

TC160 / TC160-INT-AU/EU/UK

Safe, Effective Elevated Body Temperature Screening System

**Ideal for:**

- Small & Medium Businesses
- Schools & Day Care Centers
- Warehouses & Factories
- Nursing & Retirement Homes
- Gyms and Sports Facilities
- Theaters & Arenas
- Hotels
- Restaurants



ThermaCheck™ is an affordable, easy-to-use thermal imaging system for automated elevated body temperature screening. ThermaCheck simultaneously promotes social distancing, self-measurement, and privacy by automatically isolating the subject's face for the temperature measurement without requiring a trained system operator to get accurate, reliable results.



Simple

Get set up and screening in minutes, without expensive, formal training



Automated

Automatic face detection and temperature pass/fail alerts makes ThermaCheck easy and reliable



Affordable

Priced lower than other thermal screening systems on the market

## Why Choose ThermaCheck™?

It's the most reliable, affordable elevated body temperature screening system available today, making it perfect for business lobbies and other key entry points. With easy setup and customizable temperature alarms, you'll be monitoring people's temperatures in minutes. Plus, ThermaCheck helps people maintain proper social distancing protocols to help keep your employees, customers, and guests safe.

# ThermaCheck™

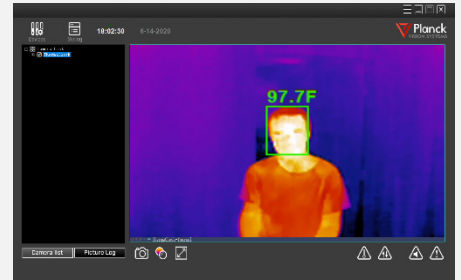
Safe, Effective Elevated Body Temperature Screening System

### What's in the box:

- ThermaCheck Camera
- Power adapter
- Ethernet cable & USB adaptor
- Desktop tripod & mount extension

### ThermaCheck software

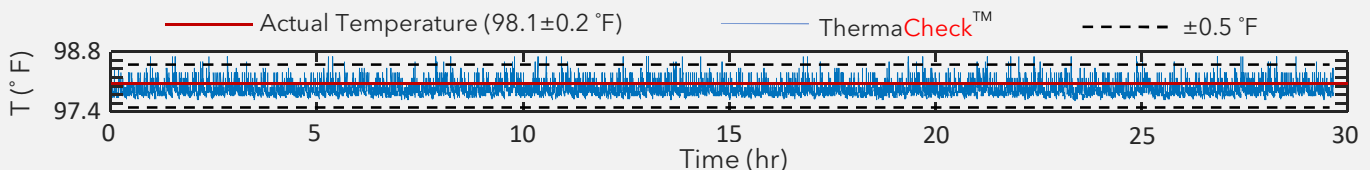
Powerful and easy-to-use interface that makes it a snap to set up and calibrate your camera's alarm levels. Plus, it gives you both on-screen and audible alerts, so you'll know if a temperature threshold has been exceeded right away, while maintaining safe social distancing.



<b>Temperature Measurement &amp; Alarm</b>	Temperature Range	Optimal: 91 - 104°F (33 - 40°C) / Max: 82 - 113°F (28 - 45°C)
	Temperature Accuracy**	Without Blackbody: $\leq \pm 0.5^\circ\text{F}$ ( $\leq \pm 0.3^\circ\text{C}$ ); (Optimal Range)
	Measurement Distance	3.5 - 6.5ft (1 - 2m)
	Calibration	Human subject or blackbody
	Target Mode	Single or Multiple Person
	Intelligent Tracking	Automatic target tracking and highest temperature readout
	Temperature Alert	User defined threshold value
<b>Thermal Camera</b>	Sensor Technology	Uncooled Vox Microbolometer
	Resolution	160 x 120
	NETD	<50 mK (0.050 °C)
	FOV	57°x 44°
<b>Visible Camera</b>	Color Palettes	Iron Red, Rainbow
	Sensor Technology	1/2.9 inch CMOS
	Pixel Size	2MP
	Resolution	1920 x 1080
	Low Light Level	Color: 0.1Lux@(F1.2) / B&W: 0.01Lux@(F1.2)
	Wide Dynamic	Supported
<b>Operating Condition</b>	Color Balance	Supported
	Digital Noise Reduction	3D digital noise reduction
	Temperature	50 - 113°F (0 - 45°C) / Preferred: 60 - 90°F (16 - 32°C);
	Humidity	EC 60068-2-30/24h 85% RH
Power Adaptor*	Input: 100-240V AC, Output: 15V 2A DC	
Dimension	3.75 x 3.5 x 1.6in (95 x 88 x 40mm)	
Weight	12.3 oz (348 g)	

\* International Power Adaptor type specified by Model Number suffix, with the following options: TC160-INT-EU (Type-C), TC160-INT-UK (Type-G) and TC160-INT-AU (Type-I).

\*\* ThermaCheck™ accuracy shown over a 30hr period without the use of a blackbody.



*Disclaimer: Our products are not used to diagnose any disease. Planck Vision Systems is not advertising our cameras as medical equipment. Our products can only identify individuals with elevated skin temperature. There is no way to thermally detect an infected individual who does not have an elevated body or skin temperature and only a licensed medical professional can determine if such an individual is experiencing an abnormal medical condition.*